

ATAL TINKERING LAB **ACADEMIC CALENDAR** 2022-23

< HAPPY TINKERING >



April

IMPORTANT DATES TO REMEMBER

14

**B R Ambedkar Birth
Anniversary Day/
Community Day Celebration**

21

**World Creativity
and Innovation Day**

26

**World Intellectual
Property Right Day**

Theme of the Month

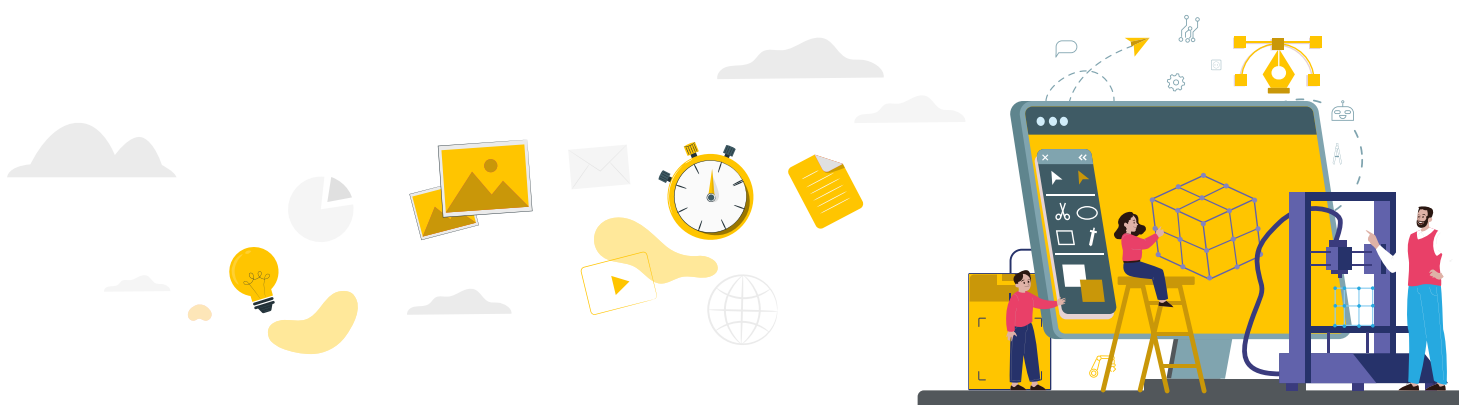
**CREATIVITY AND INNOVATION
FOR THE COMMUNITY**

MODULES

ATL Introduction Module
Community Day
Intellectual Property



S	M	T	W	T	F	S
					01 PLAN ATL CALENDAR	02
03	04	05 UPDATE ATL DASHBOARD AND SUBMIT REPORT	06	07 ANNOUNCEMENT OF ATL OF THE MONTH	08	09
10 ANNOUNCEMENT OF EXEMPLARY MENTORS OF THE MONTH	11	12	13	14 ORGANIZE COMMUNITY DAY SHOWCASE	15	16
17	18	19	20	21	22	23
24	25	26 ORGANIZE IPR DAY INNOVATIONS' SHOWCASE	27	28	29 ANNOUNCEMENT OF EXEMPLARY TEACHERS OF CHANGE	30 SUBMIT ATL WALL OF FAME STORIES



FOR REGULAR UPDATES ON TRAINING

Workshops, modules, publications, announcements, follow us.



@AIMtoInnovate



@AIMtoInnovate



@AIMtoInnovate



@NITIAayog

Tag @AIMtoInnovate on your social media posts.
For any query - log on to ATL Query Resolution system.

May

IMPORTANT DATES TO REMEMBER

11

National Technology Day

17

World Telecommunication
and Information Society Day

Theme of the Month

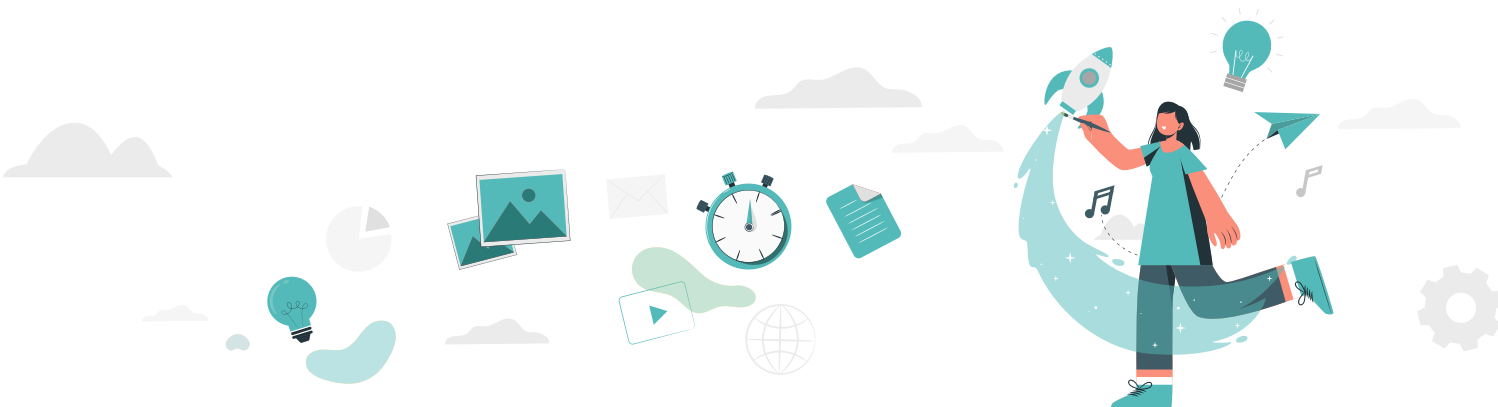
**IGNITE THE SPIRIT OF IDEATION
AND DESIGN**

MODULES

Design Thinking
Collab CAD
Python Learning



S	M	T	W	T	F	S
01	02	03	04	05 UPDATE ATL DASHBOARD AND SUBMIT REPORT	06	07 ANNOUNCEMENT OF ATL OF THE MONTH
08	09	10 ANNOUNCEMENT OF EXEMPLARY MENTORS OF THE MONTH	11	12	13	14
15	16	17	18	19	20	21
22	23	24	25	26	27	28
29	30 SUBMIT ATL WALL OF FAME STORIES	31				



FOR REGULAR UPDATES ON TRAINING

Workshops, modules, publications, announcements, follow us.



@AIMtoInnovate



@AIMtoInnovate



@AIMtoInnovate



@NITIAayog

Tag @AIMtoInnovate on your social media posts.
For any query – log on to ATL Query Resolution system.

June

IMPORTANT DATES TO REMEMBER

01

Global day of Parents
Celebrations

05

World Environment Day

Theme of the Month

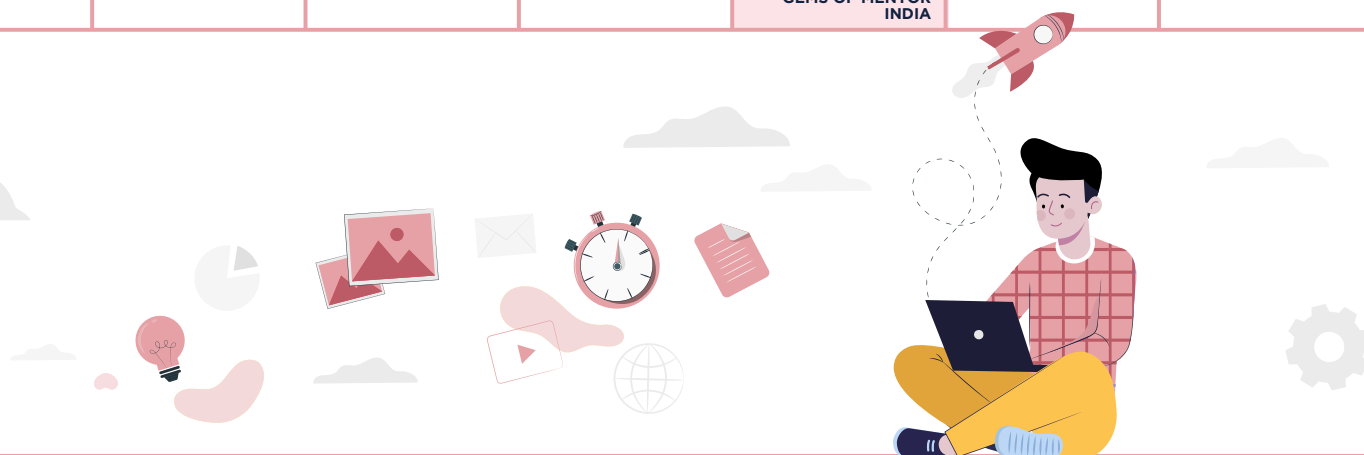
TIME FOR TINKERFEST

MODULES

Tinkerfest Bootcamp
Computational Thinking



S	M	T	W	T	F	S
			01	02	03	04
05 UPDATE ATL DASHBOARD AND SUBMIT REPORT/ UPDATE PFMS DASHBOARD	06	07 ANNOUNCEMENT OF ATL OF THE MONTH	08	09	10 ANNOUNCEMENT OF EXEMPLARY MENTORS OF THE MONTH	11
12	13	14	15	16	17	18
19	20	21	22	23	24	25
26	27	28	29	30 SUBMIT ATL WALL OF FAME STORIES/ ANNOUNCEMENT OF GEMS OF MENTOR INDIA		



FOR REGULAR UPDATES ON TRAINING

Workshops, modules, publications, announcements, follow us.



@AIMtoInnovate



@AIMtoInnovate



@AIMtoInnovate



@NITIAayog

Tag @AIMtoInnovate on your social media posts.

For any query – log on to ATL Query Resolution system.

July

IMPORTANT DATES TO REMEMBER

15

World Youth Skills Day

Theme of the Month

PITCH THE BUSINESS IDEA

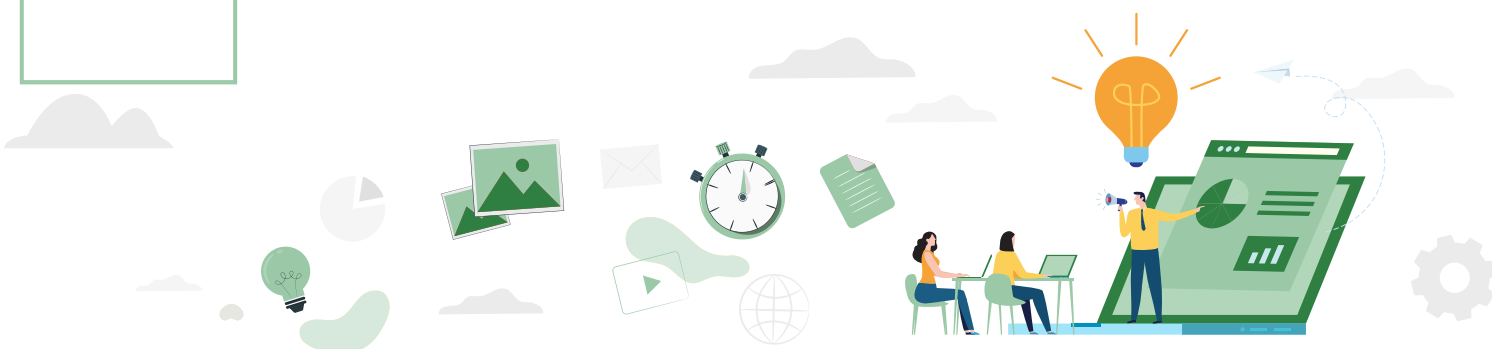
MODULES

Business Pitch Module

Physical Computing (IoT)



S	M	T	W	T	F	S
					01 ORGANIZE TINKERFEST SHOWCASE	02
03	04	05 UPDATE ATL DASHBOARD AND SUBMIT REPORT	06	07 ANNOUNCEMENT OF ATL OF THE MONTH	08	09
10 ANNOUNCEMENT OF EXEMPLARY MENTORS OF THE MONTH	11	12	13	14	15	16
17	18	19	20	21	22	23
24	25	26	27	28	29	30 SUBMIT ATL WALL OF FAME STORIES
31						



FOR REGULAR UPDATES ON TRAINING

Workshops, modules, publications, announcements, follow us.



@AIMtoInnovate



@AIMtoInnovate



@AIMtoInnovate



@NITIAayog

Tag @AIMtoInnovate on your social media posts.
For any query - log on to ATL Query Resolution system.

August

IMPORTANT DATES TO REMEMBER

15

Independence Day

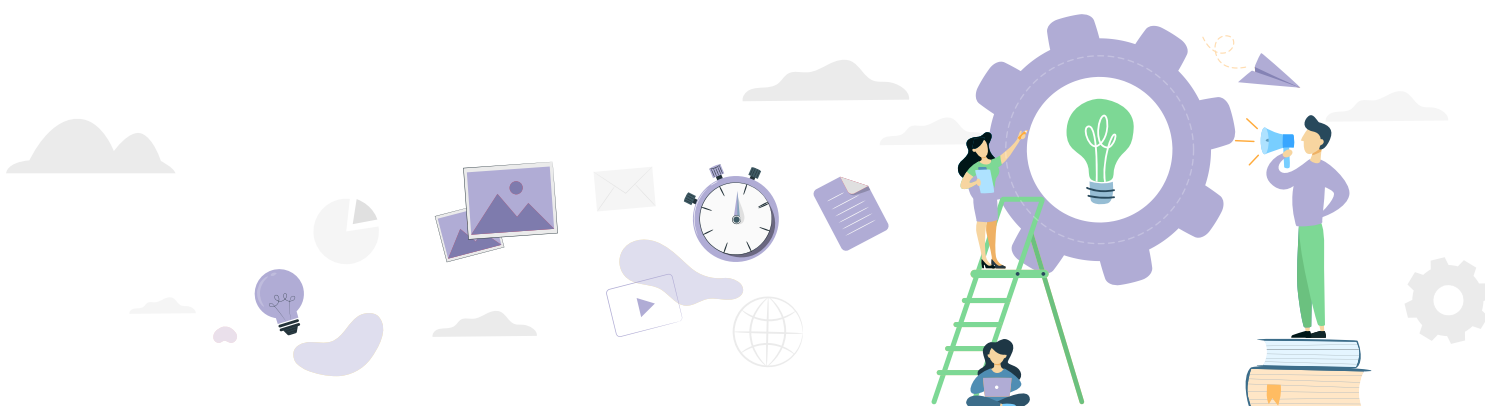
Theme of the Month

PROGRAM THE PROTOTYPE

MODULES

App Development Module
Drone Module

S	M	T	W	T	F	S
	01	02	03	04	05 UPDATE ATL DASHBOARD AND SUBMIT REPORT	06
07 ANNOUNCEMENT OF ATL OF THE MONTH	08	09	10 ANNOUNCEMENT OF EXEMPLARY MENTORS OF THE MONTH	11	12	13
14	15	16	17	18	19	20
21	22	23	24	25	26	27
28	29	30 SUBMIT ATL WALL OF FAME STORIES	31			



FOR REGULAR UPDATES ON TRAINING

Workshops, modules, publications, announcements, follow us.



@AIMtoInnovate



@AIMtoInnovate



@AIMtoInnovate



@NITIAayog

Tag @AIMtoInnovate on your social media posts.
For any query - log on to ATL Query Resolution system.

September

IMPORTANT DATES TO REMEMBER

05

**National Teachers' Day/
ATL Marathon Announcement**

08

International Literacy Day

28

**International Day for Universal
Access to Information**

Theme of the Month

**NURTURE ETHICS AND
LEADERSHIP IN TINKERING**

MODULES

ELTI Module

Cyber Smart Module



S	M	T	W	T	F	S
				01	02	03
04	05 UPDATE ATL DASHBOARD AND SUBMIT REPORT/ UPDATE PFMS DASHBOARD	06	07 ANNOUNCEMENT OF ATL OF THE MONTH	08	09	10 ANNOUNCEMENT OF EXEMPLARY MENTORS OF THE MONTH
11	12	13	14	15	16	17
18	19	20	21	22	23	24
25	26	27	28	29	30 SUBMIT ATL WALL OF FAME STORIES	



FOR REGULAR UPDATES ON TRAINING

Workshops, modules, publications, announcements, follow us.



@AIMtoInnovate



@AIMtoInnovate



@AIMtoInnovate



@NITIAayog

Tag @AIMtoInnovate on your social media posts.
For any query – log on to ATL Query Resolution system.

October

IMPORTANT DATES TO REMEMBER

02

Gandhi Jayanti/ International
Day of Non-Violence

04-10

World Space Week

Theme of the Month

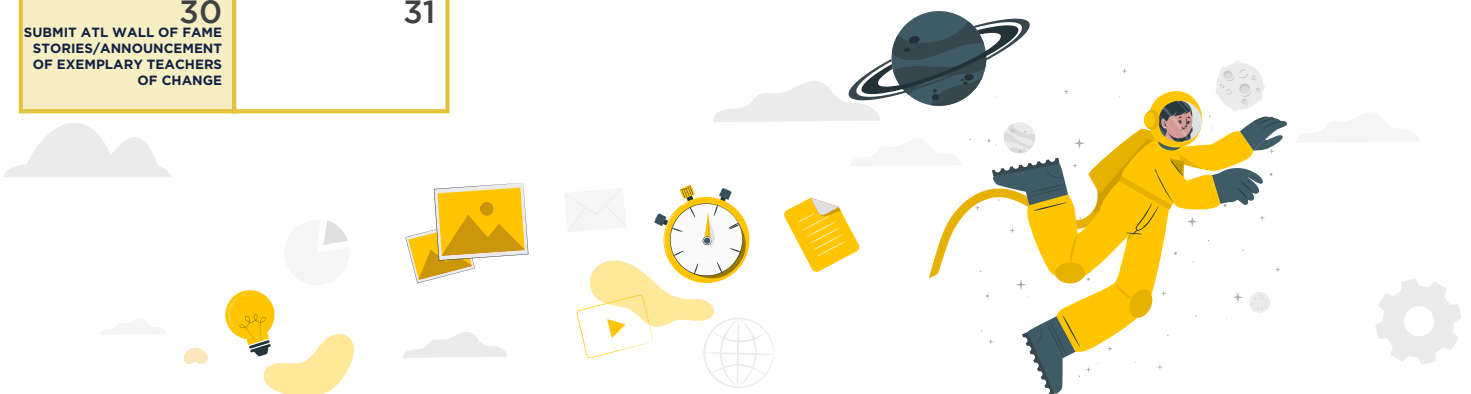
EXPLORE SPACE DYNAMICS
AND AI

MODULES

ATL Marathon 2022 Voting
Space Module
AI Base Module



S	M	T	W	T	F	S
						01
02	03	04	05 UPDATE ATL DASHBOARD AND SUBMIT REPORT	06	07 ANNOUNCEMENT OF ATL OF THE MONTH	08
09	10 ANNOUNCEMENT OF EXEMPLARY MENTORS OF THE MONTH	11	12	13	14	15
16	17	18	19	20	21	22
23	24	25	26	27	28	29
30 SUBMIT ATL WALL OF FAME STORIES/ANNOUNCEMENT OF EXEMPLARY TEACHERS OF CHANGE	31					



FOR REGULAR UPDATES ON TRAINING

Workshops, modules, publications, announcements, follow us.



@AIMtoInnovate



@AIMtoInnovate



@AIMtoInnovate



@NITIAayog

Tag @AIMtoInnovate on your social media posts.
For any query – log on to ATL Query Resolution system.

IMPORTANT DATES TO REMEMBER

National Children's Day

Constitution Day

MODULES

ATL Marathon 2022: Research
AI Step Up Module
AI Step Up Practical

S	M	T	W	T	F	S
		01	02	03	04	05 UPDATE ATL DASHBOARD AND SUBMIT REPORT
06	07 ANNOUNCEMENT OF ATL OF THE MONTH	08	09	10 ANNOUNCEMENT OF EXEMPLARY MENTORS OF THE MONTH	11	12
13	14	15	16	17	18	19
20	21	22	23	24	25	26
27	28	29	30 SUBMIT ATL WALL OF FAME STORIES			



Workshops, modules, publications, announcements, follow us.



@AIMtoInnovate



@AIMtoInnovate



@AIMtoInnovate



@NITI Aayog

Tag @AIMtoInnovate on your social media posts.
For any query – log on to ATL Query Resolution system.

December

IMPORTANT DATES TO REMEMBER

25

Shri Atal Bihari Vajpayee's
Birthday

Theme of the Month

IDEATING GAMING MODULE

MODULES

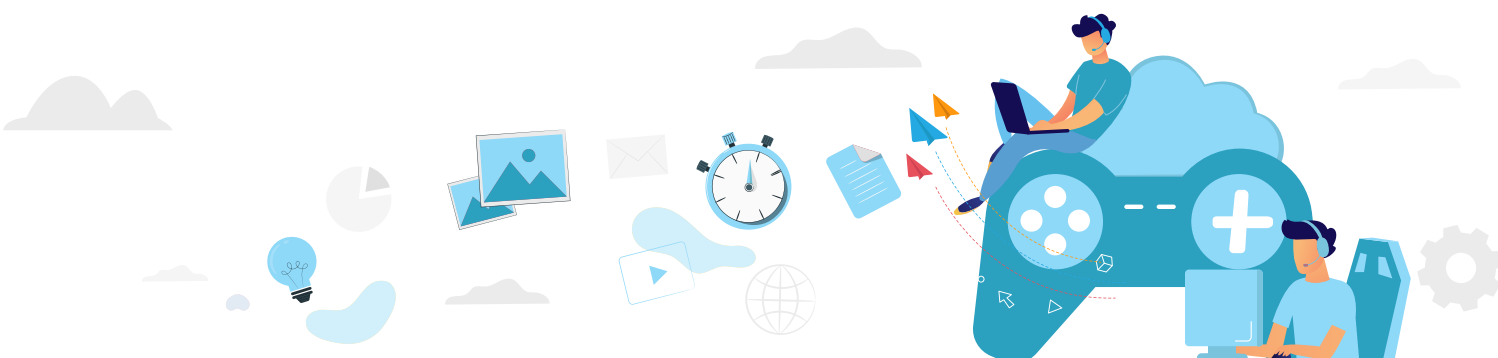
Gaming Module Beginner

Gaming Module Intermediate

Gaming Advanced Module



S	M	T	W	T	F	S
				01	02	03
04	05 UPDATE ATL DASHBOARD AND SUBMIT REPORT/ UPDATE PFMS DASHBOARD	06	07 ANNOUNCEMENT OF ATL OF THE MONTH	08	09	10 ANNOUNCEMENT OF EXEMPLARY MENTORS OF THE MONTH
11	12	13	14	15	16	17
18	19	20	21	22	23	24
25	26	27	28	29	30 SUBMIT ATL WALL OF FAME STORIES	31



FOR REGULAR UPDATES ON TRAINING

Workshops, modules, publications, announcements, follow us.



@AIMtoInnovate



@AIMtoInnovate



@AIMtoInnovate



@NITIAayog

Tag @AIMtoInnovate on your social media posts.
For any query - log on to ATL Query Resolution system.

January

IMPORTANT DATES TO REMEMBER

12

Innovation Immersion Day
Commemorating
Vivekananda Jayanti

24

International Day of Education

26

Republic Day

Theme of the Month

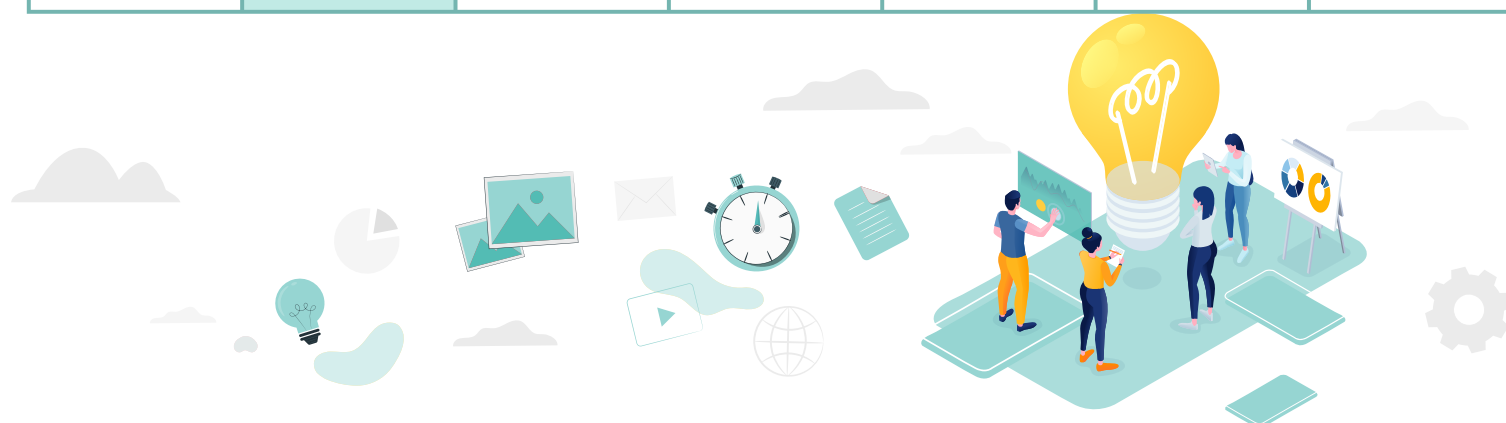
ATL MARATHON 2022: BE AN INNOVATOR

MODULES

Build Marathon Prototype



S	M	T	W	T	F	S
01	02	03	04	05 UPDATE ATL DASHBOARD AND SUBMIT REPORT/ UPDATE PFMS DASHBOARD	06	07 ANNOUNCEMENT OF ATL OF THE MONTH
08	09	10 ANNOUNCEMENT OF EXEMPLARY MENTORS OF THE MONTH	11	12	13	14
15	16	17	18	19	20	21
22	23	24	25	26	27	28
29	30 SUBMIT ATL WALL OF FAME STORIES/ APPLY FOR SUBSEQUENT TRANCHE	31				



FOR REGULAR UPDATES ON TRAINING

Workshops, modules, publications, announcements, follow us.



@AIMtoInnovate



@AIMtoInnovate



@AIMtoInnovate



@NITIAayog

Tag @AIMtoInnovate on your social media posts.
For any query - log on to ATL Query Resolution system.

February

IMPORTANT DATES TO REMEMBER

11

International Day of Women
and Girls in Science

28

National Science Day

Theme of the Month

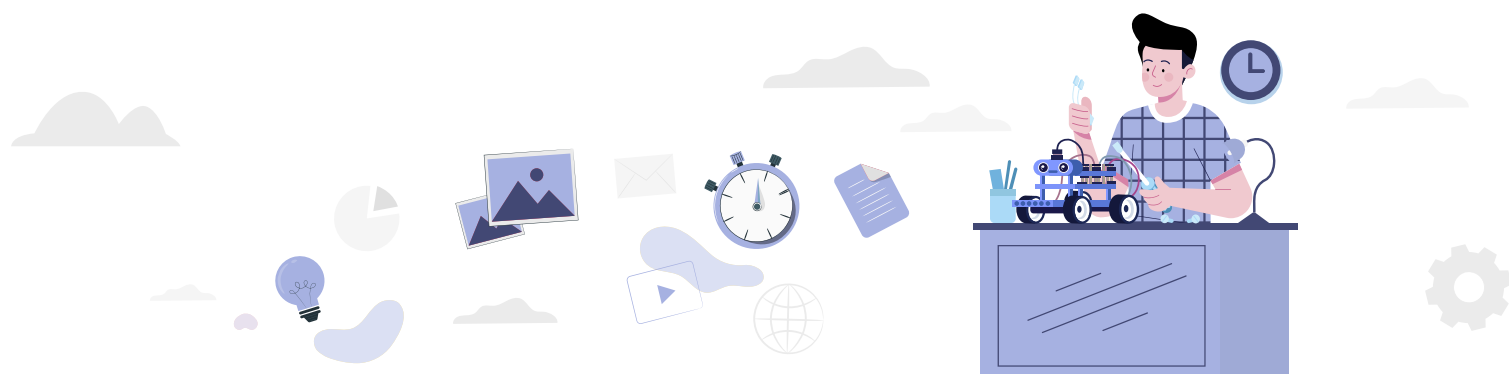
JUST TINKER

MODULES

Explore New Technology



S	M	T	W	T	F	S
			01	02	03	04
05 UPDATE ATL DASHBOARD AND SUBMIT REPORT/ UPDATE PFMS DASHBOARD	06	07 ANNOUNCEMENT OF ATL OF THE MONTH	08	09	10 ANNOUNCEMENT OF EXEMPLARY MENTORS OF THE MONTH	11
12	13	14	15	16	17	18
19	20	21	22	23	24	25
26	27	28 SUBMIT ATL WALL OF FAME STORIES				



FOR REGULAR UPDATES ON TRAINING

Workshops, modules, publications, announcements, follow us.



@AIMtoInnovate



@AIMtoInnovate



@AIMtoInnovate



@NITIAayog

Tag @AIMtoInnovate on your social media posts.
For any query – log on to ATL Query Resolution system.

March

IMPORTANT DATES TO REMEMBER

20

International Day of
Happiness

22

World Water Day

Theme of the Month

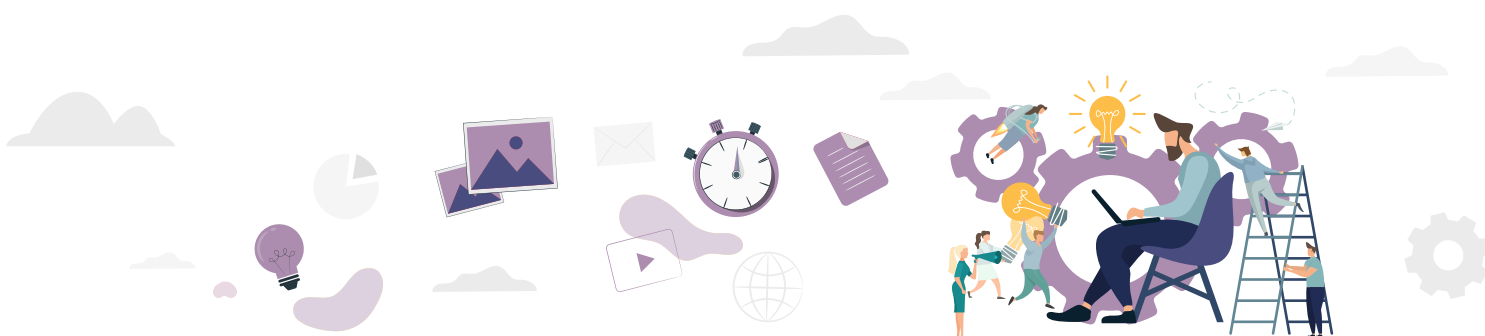
UNDERSTAND ATL OPERATIONS

MODULES

Let's Tinker! A Handbook- Guide
for successful implementation of
ATL



S	M	T	W	T	F	S
			01	02	03	04
05 UPDATE ATL DASHBOARD AND SUBMIT REPORT/ UPDATE PFMS DASHBOARD	06	07 ANNOUNCEMENT OF ATL OF THE MONTH	08	09	10 ANNOUNCEMENT OF EXEMPLARY MENTORS OF THE MONTH	11
12	13	14	15	16	17	18
19	20	21	22	23	24	25
26	27	28	29	30 SUBMIT ATL WALL OF FAME STORIES	31	



FOR REGULAR UPDATES ON TRAINING

Workshops, modules, publications, announcements, follow us.



@AIMtoInnovate



@AIMtoInnovate



@AIMtoInnovate



@NITIAayog

Tag @AIMtoInnovate on your social media posts.
For any query - log on to ATL Query Resolution system.

Orientation Brochure

Dear ATL School,

Congratulations on being selected to establish an Atal Tinkering Lab (ATL)! We welcome you to the ATL-AIM community.

Atal Tinkering Lab is an interactive workspace to inspire creativity and innovation. As you begin your journey, please go through the following points to ensure that you have an enriching learning experience:

1. ATL ESTABLISHMENT

Schools are expected to set up your ATL within 3 months from the date of receipt of ATL grant. We have created a set of ATL guidelines and ATL informational videos, that will help you in the ATL establishment process.

AIM WEBSITE



2. ATL GUIDELINES

All ATLs must follow the ATL Guidelines without fail. It is mandatory for the schools to use GeM, PFMS and MyATL dashboard for procurement, financial and operational updates respectively.

ATL GUIDELINES



3. ATL SOCIAL MEDIA

All ATLs are encouraged to create Facebook and Twitter accounts, share your ATL activities, innovation stories, tag Atal Innovation Mission, and follow us for regular updates, at:

Facebook



Twitter



YouTube



Learn How To Open Facebook Account



4. ATL TEACHER TRAINING

It is mandatory for an ATL in-charge to undergo teacher training sessions conducted by AIM, NITI Aayog and its partners. The ATLs shall be informed regularly about teacher training programs, being organized by NITI Aayog or partners, through email.

ATL TEACHER TRAINING AGENDA



5. ATL CURRICULUM

The ATL in-charge must integrate the ATL curriculum in the regular school time table.

ATL CURRICULUM RESOURCES



6. ATL ANNUAL CALENDAR OF ACTIVITIES

All ATLs are encouraged to participate in ATL-AIM activities and external innovation events.

ANNUAL CALENDAR FOR ATL ACTIVITIES



7. MyATL DASHBOARD

It is mandatory for every school to update their monthly ATL activities and submit them on the MyATL Dashboard.

MyATL DASHBOARD



8. UPDATE ATL CONTACT DETAILS

To update the contact details of the ATL schools in AIM Database, kindly log-in to the MyATL Dashboard and update the details.

9. ATL MENTOR OF CHANGE

Each ATL shall be assigned a Mentor of Change (MoC), through AIM, NITI Aayog. The details for the mentors shall be shared on the registered email address of the ATL School in-charge. The MoCs and ATL school are expected to coordinate for the Mentoring sessions for the ATL.

10. SUBSEQUENT TRANCHES OF ATL GRANT-IN-AID

All ATLs shall be evaluated on a monthly and yearly basis, using the MyATL dashboard and on-site visits. The release of subsequent funds shall be a function of the performance of an ATL. The ATL will be required to submit a Utilization Certificate, through the PFMS system to apply for subsequent tranches.

11. ATL QUERY PORTAL

In case of any queries, school may write to us through the ATL Query Portal.

ATL QUERY PORTAL



12. ATL HANDBOOK

AIM has created the ATL handbook, which captures best practices and case studies for smooth running of your ATL.

ATL HANDBOOK



13. ARTICLES TO HELP YOU UNDERSTAND THE PHILOSOPHY OF AN ATL

a. Building Grassroots Student Entrepreneurs



b. Atal Tinkering Lab (ATL): An opportunity to experience innovation in school



c. Why it is important to create and foster entrepreneurial mind-set in India's high school students



d. Unleashing The Power Of An Innovative Mind



e. Cash prize awards aren't enough to incentivize young students to Innovate



f. Finding Life's Purpose In Empowering Young Students To Innovate



g. Teachers Day 2018: Young Teachers Transforming Into Modern Age 'Gurus'



h. Digital learning and need to revamp education system

